

# MDVR-X3-H0204

**Mobile Digital Video Recorder**


## Main Features

- ◆ Supports 2 channels WD1+4 channels 720P
- ◆ Supports Hard disk for main recording
- ◆ Supports SD card for mirror recording
- ◆ Supports GPS for location tracking
- ◆ Supports WIFI for video files download
- ◆ Built-in 3G/4G for live view and remote management
- ◆ Brand new and fashionable metal design
- ◆ With more excellent software performance
- ◆ Adopts rich interfaces

## Overview

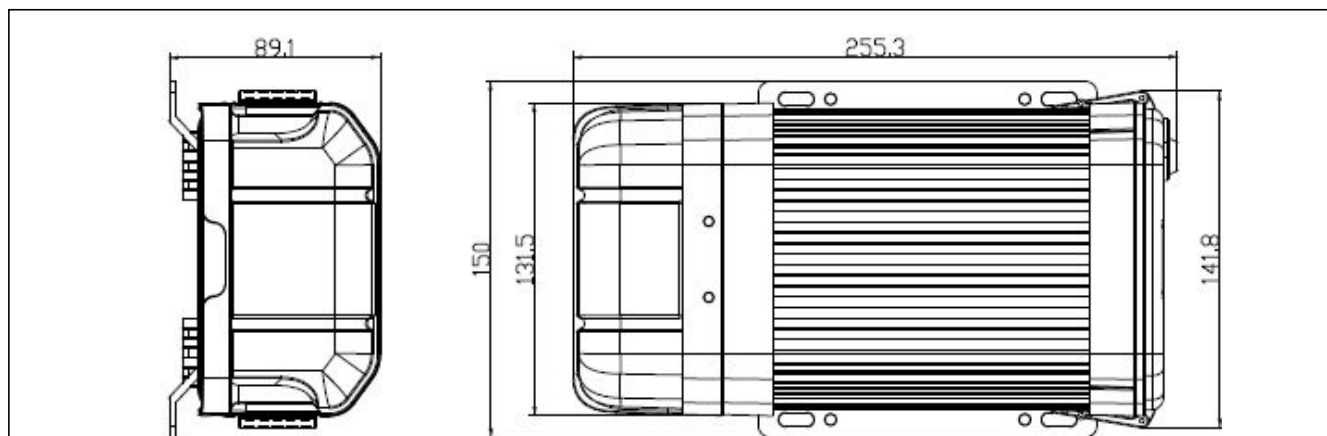
X3-H0204 is a functional Mobile Digital Video Recorder specially designed for vehicle video surveillance and remote monitoring. It has a high-speed processor and embedded operating system, combining with the most advanced H.264 video compression / decompression technology, network, as well as GPS positioning technology. It supports not only video recording in 720P, WD1, HD1 and CIF formats, but also vehicle travel information recording and wireless data upload. It is powerful with modular design, flexible installation, easy maintenance and high reliability.

## Specification

Function Overview		Preview, Recording, Playback, Network, Locating
System	OS	Linux 3.0.8
	Control Mode	CP4, Easy Check, network(3G/4G/WIFI), mouse
Video	Input	2 channels WD1+4 channels 720P
	Output	1 channel
	Total Resource	2 x 25fps WD1 @ PAL / 2 x 30fps WD1 @ NTSC +4 x 30fps 720P
	Video Signal Standard	Electrical level: 1Vpp Impedance : 75Ω NTSC/PAL Optional
Audio	Input	6 channels(Including IPC x 4)
	Output	1 channel
	Audio Signal Standard	Electrical level: 2Vpp Input impedance: 4.7kΩ
Display	Display Split	1/4/9
	OSD	GPS information, alarm, vehicle No., speed, date/time
	Operation Interface	Semi-transparent GUI
Recording	Video/Audio Compression	Video: H.264
		Audio: ADPCM, G.711A, G.711U
	Image Resolution	Analog: PAL: WD1(928X576), WHD1(928X288), WCIF(464X288), D1(704X576), HD1(704x288), CIF(352x288); NTSC: WD1(928X480), WHD1(928X240), WCIF(464X240), D1(704x480), HD1(704x240), CIF(352x240); Digital: 720P(1280X720);
	Image Quality	1-8 levels adjustable (1 is the best)
	Recording Mode	Boot up/Manual/Schedule/Alarm (sensor trigger, speed, acceleration, video loss, temperature)
	Pre-recording	0-60minutes
	Post-recording	0-30 minutes
Playback	Mirror/Dual Recording	Support
	Playback Channel	1 channel by local playback
	Search Mode	Date/time, channel, event
Network	Ethernet	RJ45 x1 (10/100M)
	IPC Ethernet	6-pin M12( 10/100M x 2, PON power supply)
	WIFI	Supports(802.11b/g/n)

	3G/4G (Supports single module)	EVDO/WCDMA/TDD-LTE/FDD-LTE
<b>Locating</b>	GPS	Location tracking, speed detection and time sync
<b>Storage</b>	Hard Disk	2.5" SATA hard disk x 1(Up to 2 TB)
<b>Interface</b>	USB	USB2.0 × 2(One for Easy Check, one for external mirror recording)
	SD	SD × 1
	SIM	SIM slot x 1
	Serial interface	RS232 × 2, RS485 × 2
	Sensor	8 inputs, 2 outputs
	Serial	G-sensor( Internal)
	Speed	1 channel pulse speed detection
	Interface	Interface (CP4 Optional)
	Intercommunication	I MIC interface
<b>Power</b>	Input	DC8-36V, ACC
	Output	5V@1000mA, 12V@1000mA

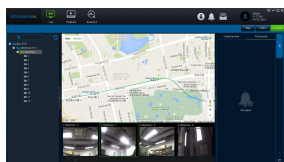
## Dimension (mm)





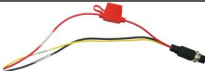
<b>Physical Characteristic</b>	Dimension (L × W × H)	255.3mmx150mmx89.1mm
	Weight	2.2Kg
<b>Environment</b>	Operating Temperature	-40°C- +70°C(With heater) or -10°C- +70°C
	Operating Relative Humidity	8%-90% ( No Condense )

## PC Software

Ceiba II



## Standard accessories

Accessories	Description	Quantity	Accessories	Description	Quantity
	Vehicle fuses (7.5A and 15A)	2		MDVR key	1
	9 pin aviation power input wire	1			

## Optional accessories

Accessories	Description	Accessories	Description
	UPS3.0		Card reader
	Inertia sensor		LED panel
	Easy Check		Multi-functional displayer CP4
	6pin aviation head transforming to RJ45		On - Board Diagnostics
	Fire proof box		Serial connection box
	Disk reader		Serial alarm wire
	Built in 3G/4G module and Antenna		GPS module and Antenna
	Built-in WIFI module and Antenna		