

# MDVR-M1-H0401

## Mobile Digital Video Recorder



### Main Features

- ◆ Supports 4 channels WD1+1 channel 720P
- ◆ Supports dual SD cards for main recording
- ◆ Supports GPS for location tracking
- ◆ Supports 360 degree anti-vibration
- ◆ Supports USB2.0 high speed backup
- ◆ Supports data recovery technology

### Overview

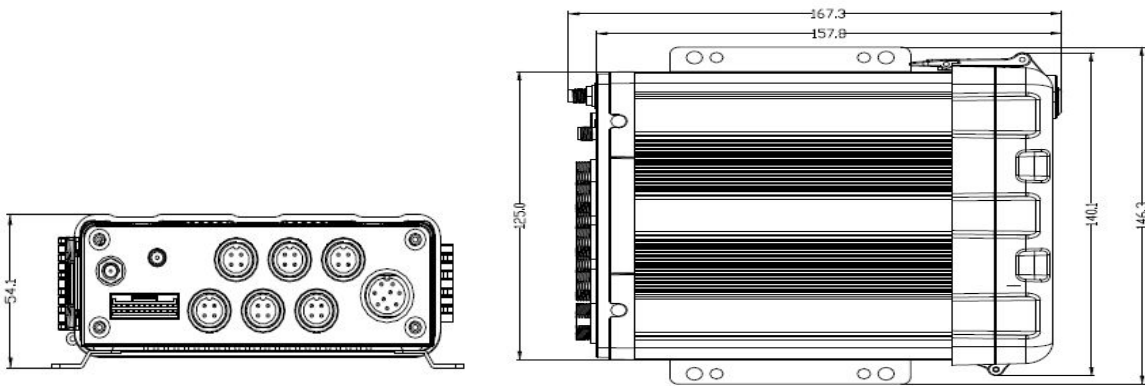
M1-H0401 is a functional Mobile Digital Video Recorder specially designed for vehicle video surveillance. It has a high-speed processor and embedded operating system, combining with the most advanced H.264 video compression / decompression technology, as well as GPS positioning technology. It supports not only video recording in 720P, WD1, HD1 and CIF formats, but also vehicle travel information recording and local playback & analysis. It is powerful with flexible installation, easy maintenance and high reliability.

### Specification

Function Overview		Preview, Recording, Playback, Locating
System	OS	Linux 3.0.8
	Control Mode	Easy Check, CP4, Mouse
Video	Input	4 channels WD1+1 channel 720P
	Output	1 channel
	Total Resource	4x25fps WD1 @ PAL / 4x30fps WD1 @ NTSC +30fps 720P
	Video Signal Standard	Electrical level: 1Vpp Impedance : 75Ω NTSC/PAL Optional
Audio	Input	5channels (1 channel IPC audio input)
	Output	1channel
	Audio Signal Standard	Electrical level: 2Vpp Input impedance: 4.7kΩ
Display	Display Split	1/4/9
	OSD	GPS information, alarm, vehicle No., speed, date/time
	Operation Interface	Semi-transparent GUI
Recording	Video/Audio Compression	Video: H.264
		Audio: ADPCM
	Image Resolution	Analog: PAL: WD1(928X576), WHD1(928X288), WCIF(464X288), D1(704X576), HD1(704x288), CIF(352x288); NTSC: WD1(928X480), WHD1(928X240), WCIF(464X240), D1(704x480), HD1(704x240), CIF(352x240); Digital: 720P(1280X720);
	Image Quality	1-8 levels adjustable (1 is the best)
	Recording Mode	Boot up/Manual/Schedule/Alarm
	Pre-recording	0-60minutes
	Post-recording	0-30 minutes
	Mirror/Dual Recording	Support
Playback	Playback Channel	1 channel by local playback
	Search Mode	Date/time, channel, event
	IPC Ethernet	6-pin M12(10/100M x 1, PON power supply)
Locating	GPS	Location tracking, speed detection and time sync
Storage	SD Card	SD card x 2
Interface	USB	USB2.0 x 1

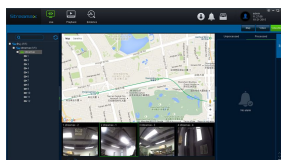
	RS232	RS232 × 1
	Sensor	8 inputs, 2 outputs
	Speed	1 channel pulse speed detection
	Intercommunication	I mic interface
	Interface	CP4 Optional
Power	Input	DC8-36V, Ignition signal
	Output	5V@500mA
	Max Power Consumption	29W
	Standby Power Consumption	≈0W
Others	Water Proof Rate	IP54

## Dimension (mm)



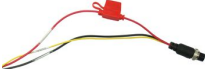


		
Physical Characteristic	Dimension (L × W × H)	167.3mm x 146.3 mm x 54.1mm
	Weight	0.83Kg
Environment	Operating Temperature	-40°C- +70°C(With heater) or -10°C- +70°C
	Operating Relative Humidity	8%-90% ( No Condense )

## PC Software

### Ceiba II



## Standard accessories

Accessories	Description	Quantity	Accessories	Description	Quantity
	Vehicle fuses (7.5A and 15A)	2		Remote controller	1
	9 pin aviation power input wire	1		Screws	6
	MDVR key	1			

## Optional accessories

Accessories	Description	Accessories	Description
	UPS3.0		Card reader
	Inertia sensor		LED panel
	Easy Check		Multi-functional displayer CP4
	6pin aviation head transforming to RJ45		On - Board Diagnostics
	Fire proof box		Serial alarm wire
	Back cover		Serial expansion box
	Video transforming wire		UPS-S
	Amplifier&speaker transforming wire		Serial transforming wire
	Disk reader		GPS module and Antenna